

The Most Advanced Lens for Keratoconus!

ComfortKone[®] KERATOCONUS ASPHERIC

Advanced Design. Simple Success.

This easy to use and highly successful lens system is so effective that it has specific design clearance from the FDA for keratoconic fitting. ComfortKone creates maximum corneal alignment for the highest level of comfort and visual acuity.

ComfortKone incorporates a straight-forward design system that allows complete customization of lens parameters. This optimizes lens fit and visual acuity without sacrificing simplicity. It truly fits keratoconus in any stage.

For patients with more complex fitting requirements such as those with Pellucid Marginal Degeneration, ComfortKone can be made with more complex geometries. Features such as off-center zones, toric and asymmetric toric parameters can be used with the assistance of our fitting consultants.

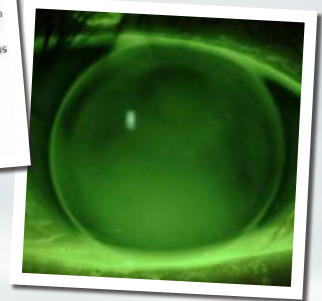
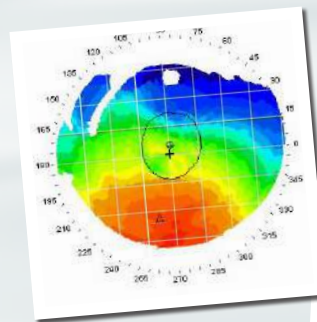
Metro Optics...Always Ahead of the Curve.

"The ComfortKone is my keratoconic lens of choice. Its wide range of parameters and highly flexible fitting system make it easy to use on a wide variety of cones."

Renee E. Reeder, OD, FFAO
Associate Professor
Chief, Cornea Center
Illinois College of Optometry

Signature
Series

FDA CLEARED



The Metro Optics Advantage

- Simple Warranty Policy
- Free Standard Shipping
- Free Plasma Treatment on all GP Lenses
- No Hidden Add on Charges

Custom Contact Lenses
METRO
OPTICS